



Mayor's Office of the National Western Center

CONSTRUCTION & DESIGN UPDATE

IMAGINE. DISCOVER. CULTIVATE.

BE IN THE KNOW! RIGHT ON YOUR PHONE!

NATIONAL WESTERN CENTER

TEXT UPDATES

64600

FOR CONSTRUCTION, NEWS AND EVENTS INFORMATION



November 2019

Rail construction is underway. This is rail being set at the North end of the site.



Photo Courtesy: Mayor's Office of the National Western Center Construction Program





November 2019
Concurrent Operations. Pen installation and wash stations for the 2020 Stock Show.



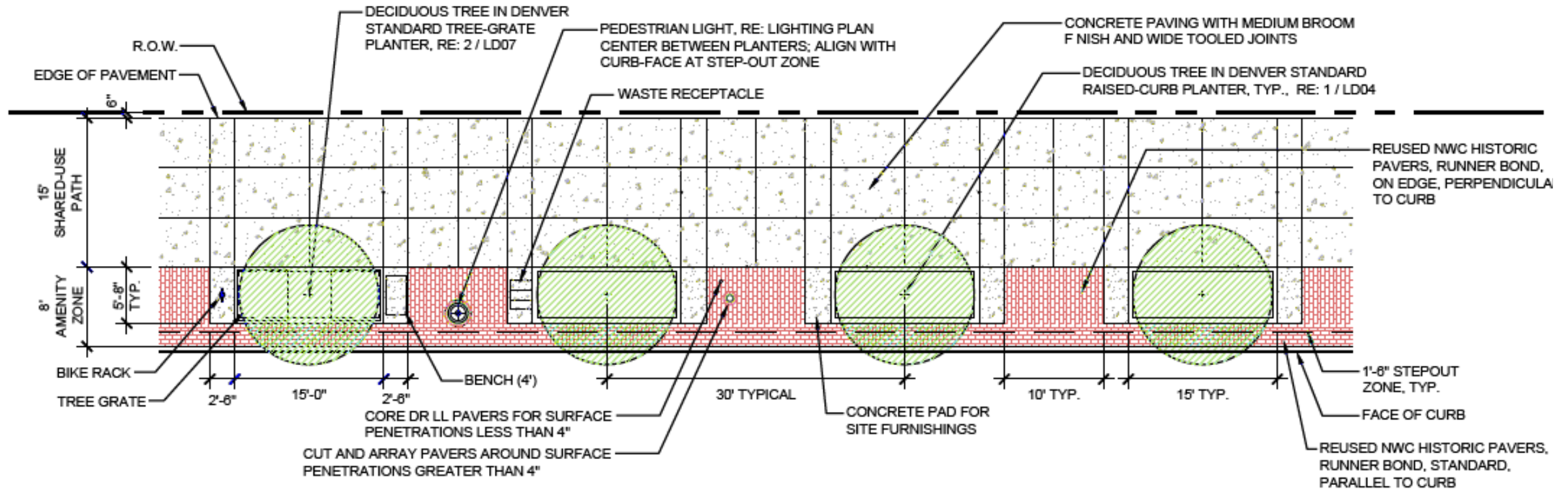
BETTIE CRAM DRIVE



BETTIE CRAM DRIVE



BETTIE CRAM DRIVE



STREETSCAPE FURNISHINGS PALETTE

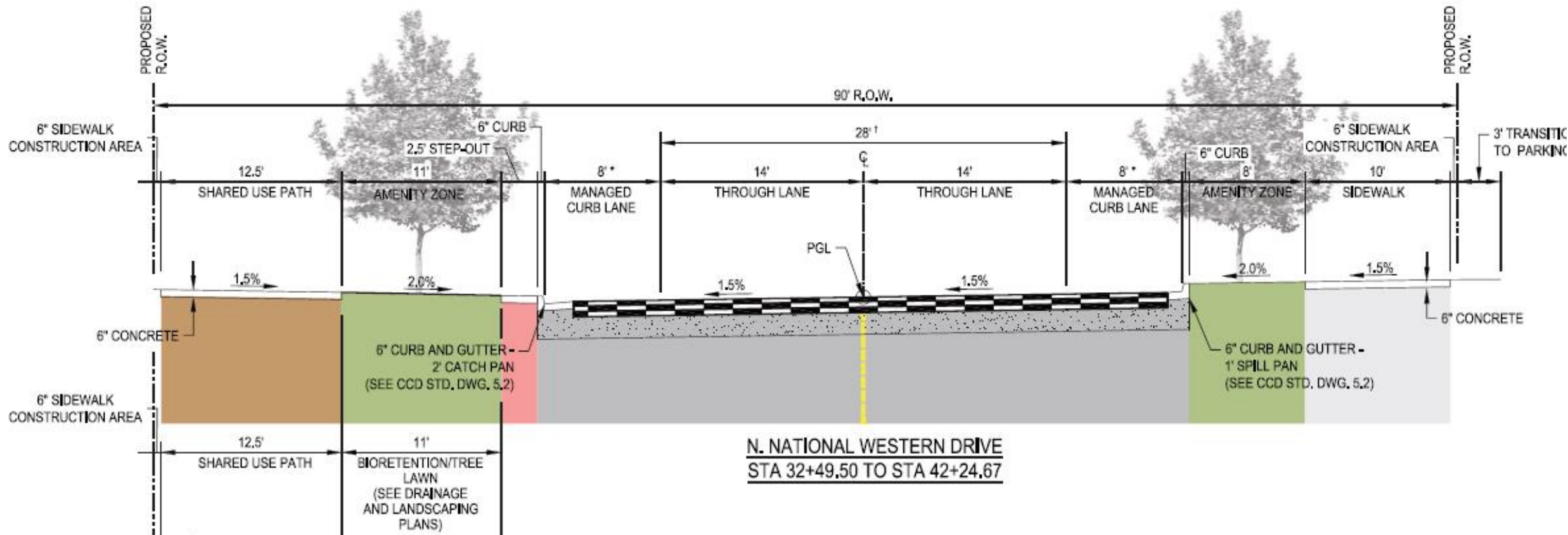




NATIONAL WESTERN DRIVE



NATIONAL WESTERN DRIVE EXAMPLE CROSS SECTION





STOCKYARDS EVENT CENTER



STOCKYARDS EVENT CENTER

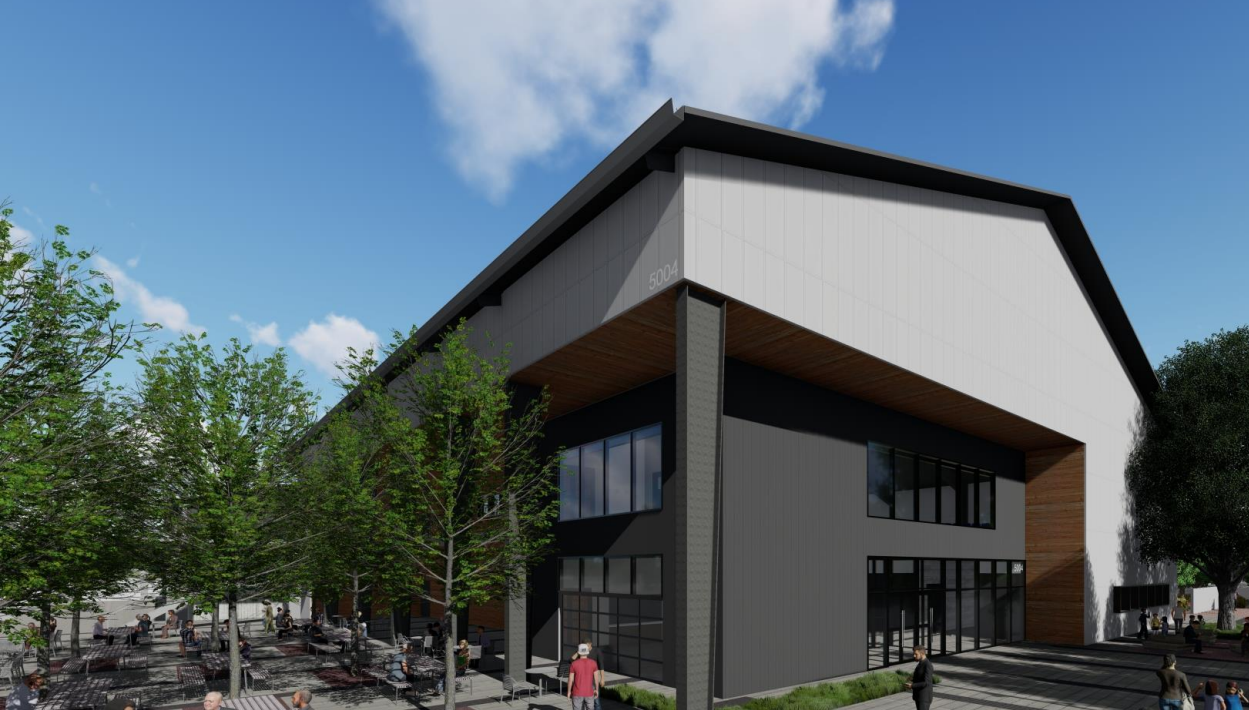
ENTRY CORRIDOR ENLARGEMENT



National Western Center - Stockyards and Event Center 22426.000

14 October 2019





Conceptual Design – renderings subject to change





RIVERFRONT OPEN SPACE



RIVERFRONT OPEN SPACE



PROGRAM ELEMENTS KEY:

1 PAD SITE: RETAIL / COMMERCIAL

- » Located at National Western Drive and Bettie Cram Drive
- » Retail / Commercial use
 - Coffee House
 - Brew Pub
 - Can support amphitheater programming and events with restrooms and power
 - Outdoor seating

2 AMPHITHEATER

- » Natural stepped walls, betterments
- » Seating / Walls
- » Sloped seating

3 PICNIC GROVE

- » Passive lawn
- » Picnic
- » Lounging
- » Small and medium groups

4 RIVER VIEW SEATING

- » Views of river
- » Future beach and bar access

5 SHEEP BRIDGE

- » Landmark / supports historic narrative
- » Defines major space

6 MEADOW

- » Passive lawn
- » Picnic
- » Lounging
- » Medium to large groups
- » Can be utilized for events

7 DELGANY SIPHON

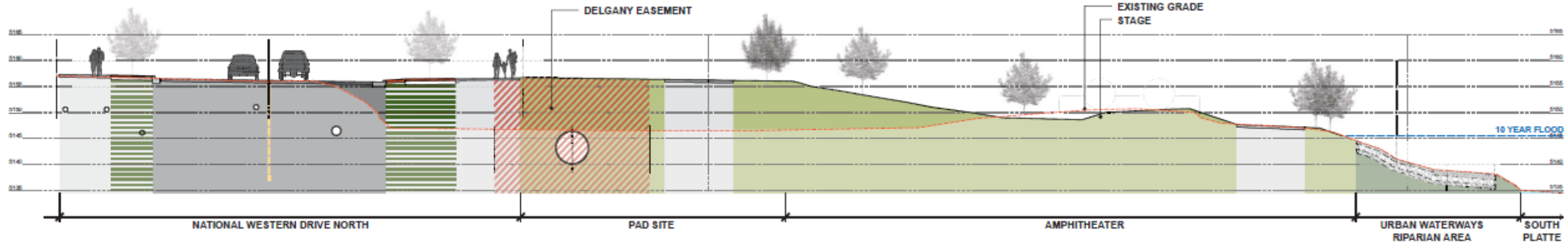
- » Modified to limit impacts

8 PLAY OPPORTUNITIES

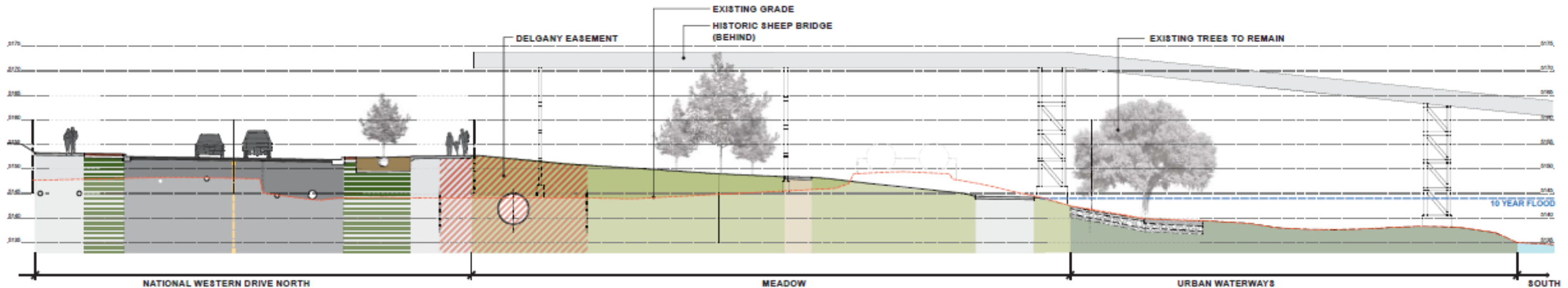
- » Locations to be determined



RIVERFRONT OPEN SPACE



Section near Bettie Cram Drive



Section at Sheep Bridge



RIVERFRONT OPEN SPACE





PUBLIC ART UPDATE



PUBLIC ART UPDATE

- Process being led by Arts and Venues
- Selection of Cliff Garten Studios as the artist for the Main Campus Plaza
- Selection Committee has shortlisted 4 artists for the River Bridges public art. Artist proposals/interviews in late January/early February
- Process to begin to select artist(s) for the Riverfront Open Space in early January 2020
 - National Call for Artists
 - Local Call for Artists
- Continue to look for additional Public Art opportunities as the design of the site and buildings progress





Thank You



www.nationalwesterncenter.com